

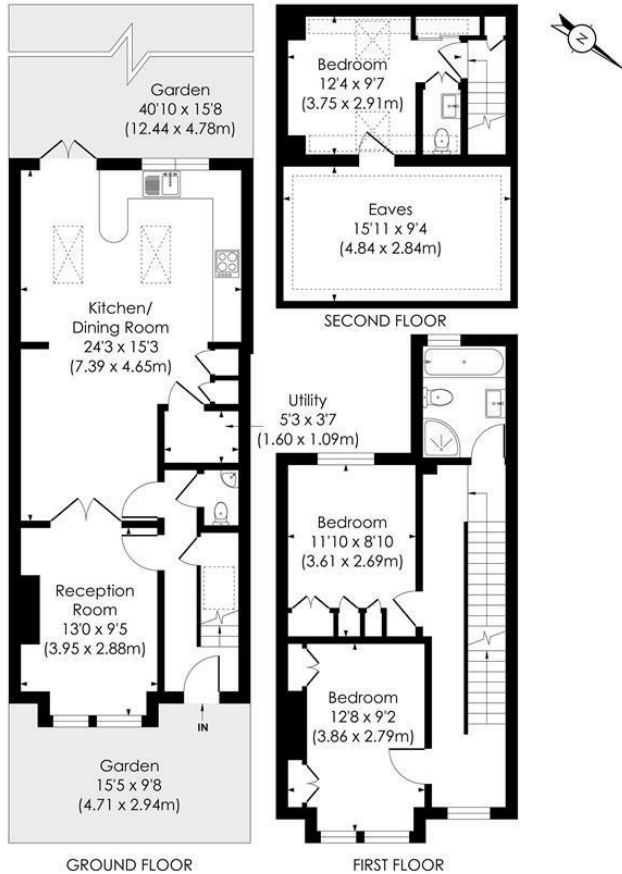
**Vernon Avenue
Raynes Park, SW20 8BN**

£825,000 Freehold

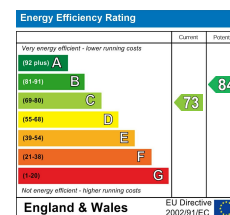


VERNON ROAD, SW20

Approx. Gross Internal Floor Area
1114 Sq. ft./103.57 Sq. m



- 1114 sqft - Three Double Bedroom - Fully Extended
- Edwardian Apostle House
- 40'10 ft West Facing Garden
- Middle Of Vernon Avenue
- Easy Access To Raynes Park Station And High Street
- Downstairs W.C And Utility Room
- Spacious Open Plan Kitchen/Dining/Family Room
- No Onward Chain
- EPC - C
- Council Tax Band - D



For Free Mortgage Quote and Best Mortgage Rates, call Ellisons Mortgage Advisor on 0208 944 9595



Although these particulars are believed to be correct, their accuracy is not guaranteed and they do not form part of any contract.

Celebrating 30 years of successful Sales and Lettings in Merton

